



Pushing the Frontiers of Mineral Exploration



This document has been prepared by Torq Resources Inc. (the “Company”) solely for informational purposes. This presentation (the “Presentation”) is the sole responsibility of the Company. Information contained herein does not purport to be complete and is subject to certain qualifications and assumptions and should not be relied upon for the purposes of making an investment in the securities or entering into any transaction. The information and opinions contained in the presentation are provided as at the date of this presentation and are subject to change without notice and, in furnishing the presentation, the Company does not undertake or agree to any obligation to provide recipients with access to any additional information or to update or correct the presentation.

The presentation may contain "forward-looking statements". Forward-looking information is information that includes implied future performance and/or forecast information including information relating to, or associated with, exploration and or development of mineral properties. These statements or graphical information involve known and unknown risks, uncertainties and other factors which may cause actual results, performance or achievements of the Company to be materially different (either positively or negatively) from any future results, performance or achievements expressed or implied by such forward-looking statements.

Bryan Atkinson is the Qualified Person who assumes responsibility for the technical disclosures in this presentation.

- Experienced management & technical team with a track record of success
- \$13 million treasury with no debt
- Newly acquired Speedway and West Mercur projects in Utah
- Currently exploring a large land package in Newfoundland
- In the early stages of building a district scale discovery portfolio

Our team has raised over \$500 million and monetized successes in three previous companies

 <p>(Formerly Keegan Resources)</p>	<p>Took an exploration company to production, 2005 – 2016 (Ramping up to 450,000 ounces / year)</p> <p><i>Producing</i></p>
	<p>Sold an exploration company pre-resource, 2010 – 2014 (Sold for \$205 million to Agnico Eagle in 2014)</p> <p><i>Sold</i></p>
	<p>Assembled a major exploration portfolio and team, 2013 – received strategic Investment from Goldcorp Jan 9, 2017 (+\$35mm) (Over 46,000 meters drilled during 2017 for exploration)</p> <p><i>Exploring</i></p>
	<p>A junior exploration company (sister company to Auryn) with the goal of establishing a tier-one mineral exploration portfolio</p> <p><i>Exploring</i></p>

The Discovery Curve = Value creation

- Previous successes based on **Discovery**

Asanko Gold – **Producing**

(Formerly Keegan Resources)

2008 – 2010



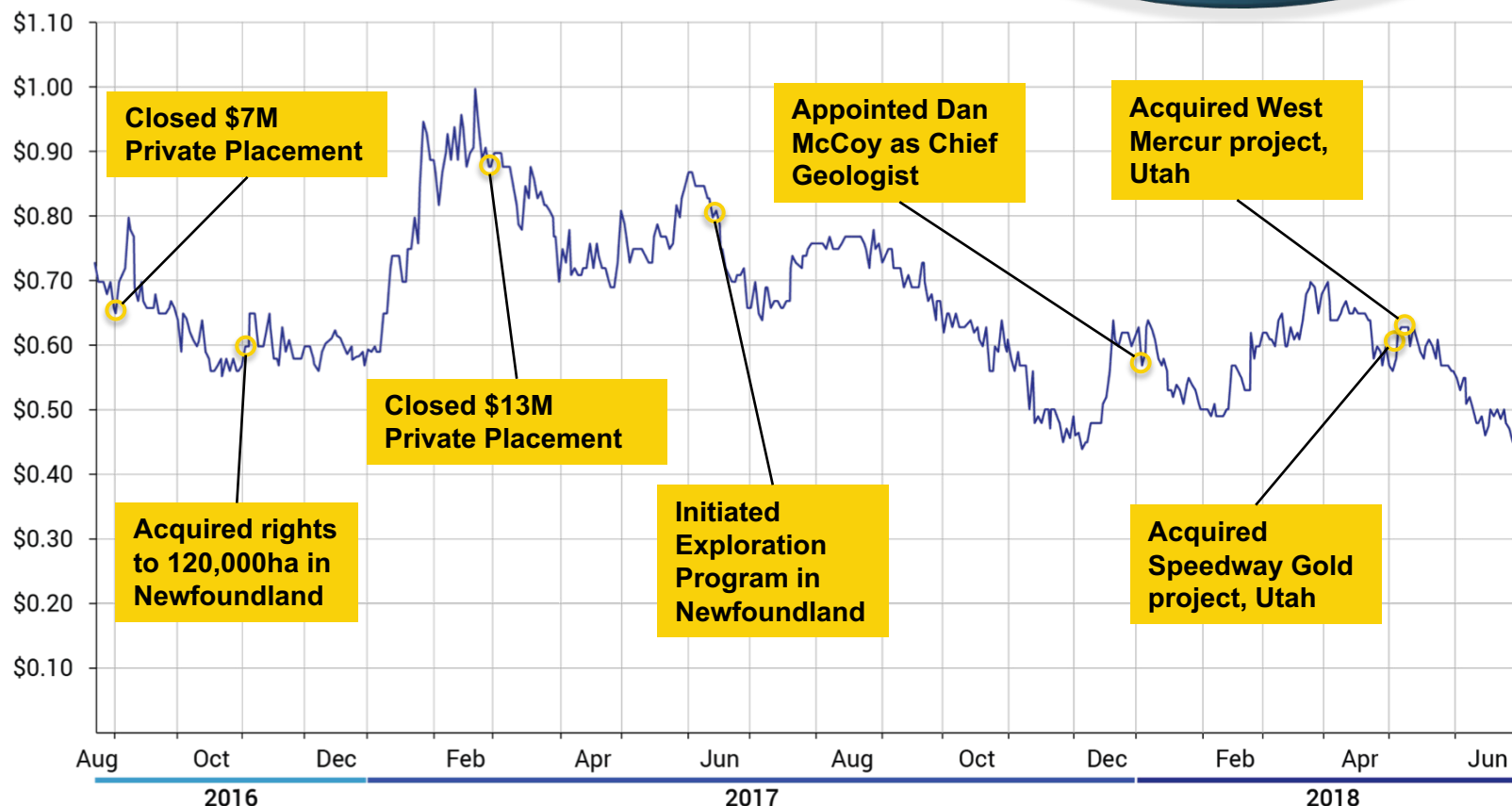
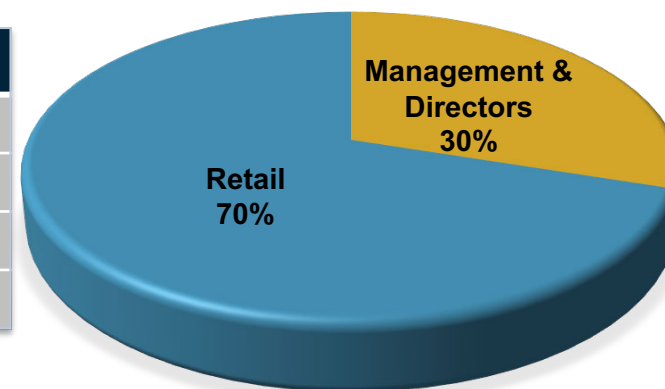
Cayden Resources – **Sold**

May 2013 – Sep 2014



Capital Structure, Ownership, Performance

Capitalization	As of February 16, 2018
Shares outstanding	77,324,164
Options outstanding \$0.85	6,408,750
Shares outstanding fully diluted	83,732,914
Treasury	\$13M



Management

Michael Kosowan, M.A.Sc. (Mining), P.Eng. **President & CEO**

Ivan Bebek **Co-Chairman**

Shawn Wallace **Co-Chairman**

Peter Rees, CPA, CA **CFO and Corporate Secretary**

Daniel McCoy **Chief Geologist**

Directors

Ivan Bebek

Steve Cook

Shawn Wallace

Jeffrey Mason

Michael Kosowan

World Class Technical Team – “Multiple Disciplines”



Daniel McCoy: Chief Geologist
Former Chief Geologist at Cayden Resources and Keegan Resources (now Asanko Gold)

Michael Henrichsen: Structural Geologist
Former Global Structural Geologist Newmont

David Smithson: Technical Advisor
Former Global Mapper/ Geologist Newmont; Technical Lead at Cayden Resources

Antonio Arribas, PhD, MSc: Director
Former Chief Geologist Newmont, Former VP Geological Sciences BHP Billiton

Miles McAlister: Technical Advisor
Former Exploration & Business Development Manager for Newmont (Africa/Europe)

David Heberlein: Geochemist
Former Global Chief Geochemist Barrick Gold: +37 years of mineral exploration experience in 25 countries

Kim Cook: Geophysicist
Former Global Geophysicist Newmont & Anglo: regarded as world’s leading magnetics interpreter

Mike McMillan: Research Inversions Geophysicist (CGI – UBC)
Former Global Geophysicist Newmont: regarded as world’s leading specialist in EM and IP inversions

Nigel Radford: Geochemist
Former Chief Geochemist Newmont: +40 years of global experience

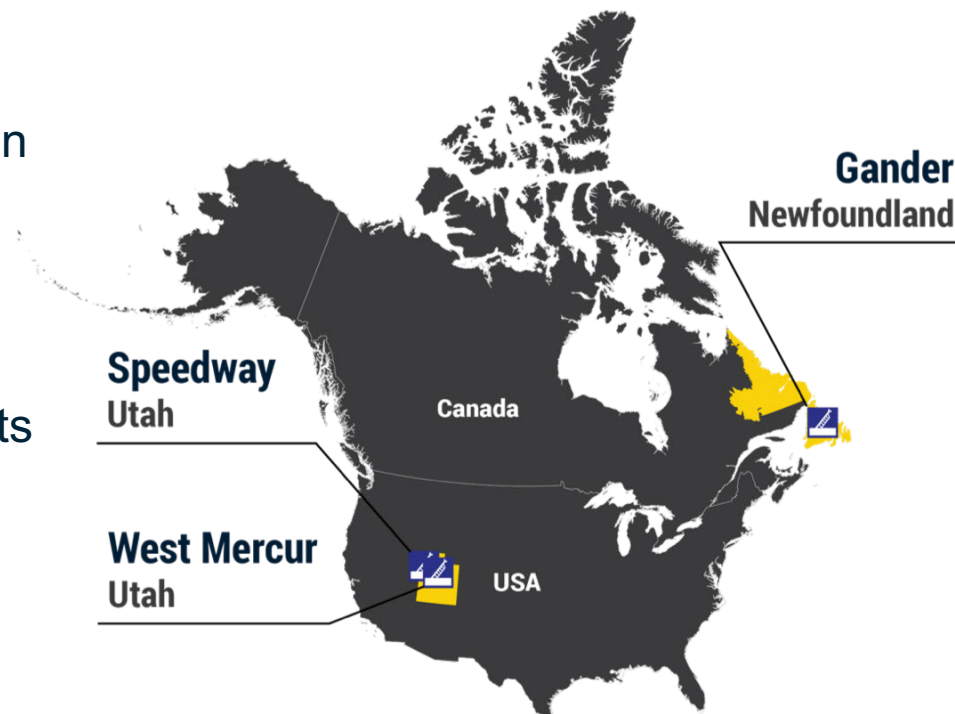
Ralph Stea: Quaternary Geologist
Former Surficial Geologist and Geochemist with Nova Scotia Department of Natural Resources

Utah

- On-going geological investigation in the region
- Additional staking and structural mapping
- Sample collection and assay results pending

Newfoundland

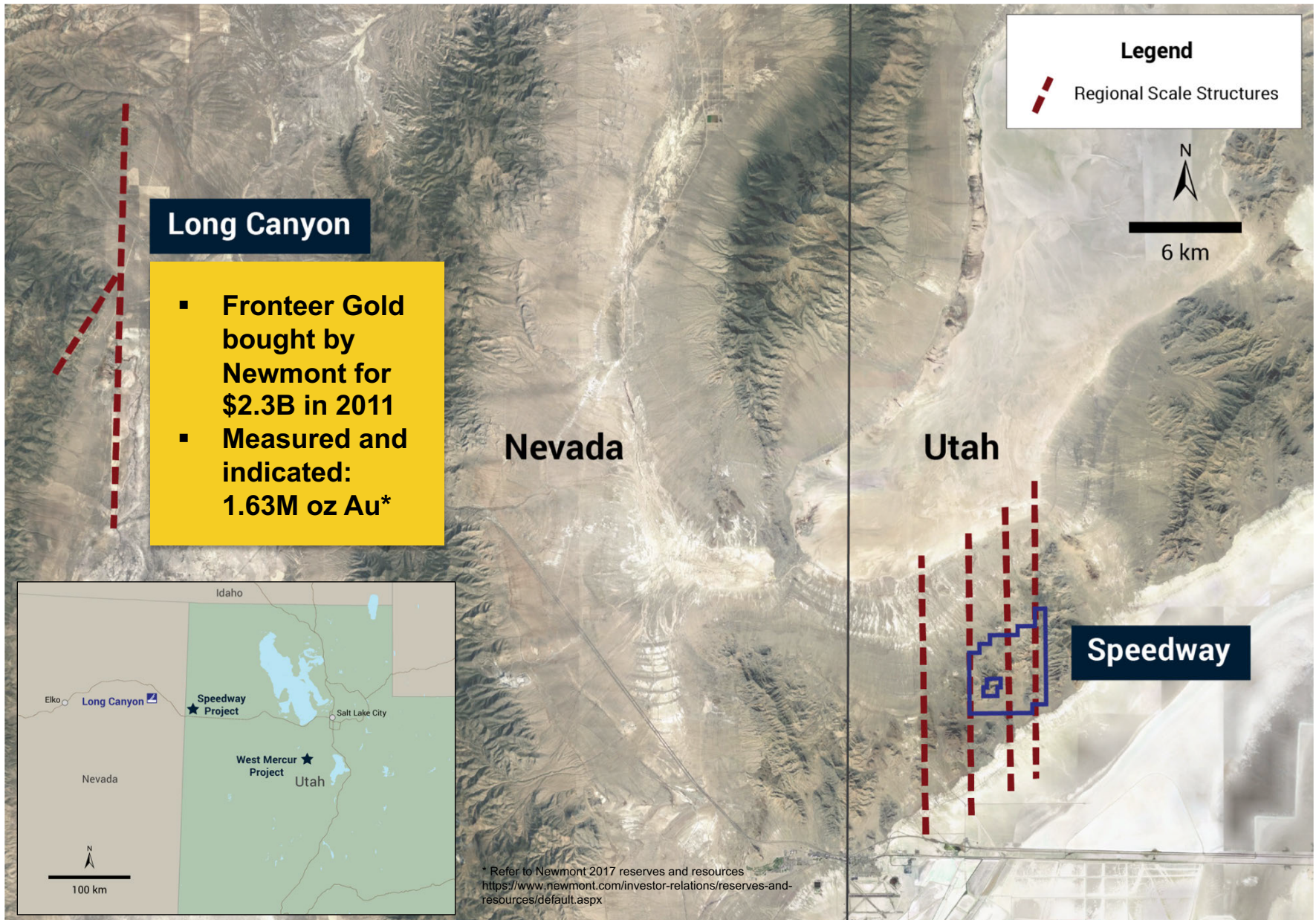
- Exploration focus on Gander Gold project
- Road accessible and good infrastructure
- Properties situated along the northeast trend of Marathon Gold's Valentine Lake discovery
- Drill targets to be developed in Summer 2018 through trenching

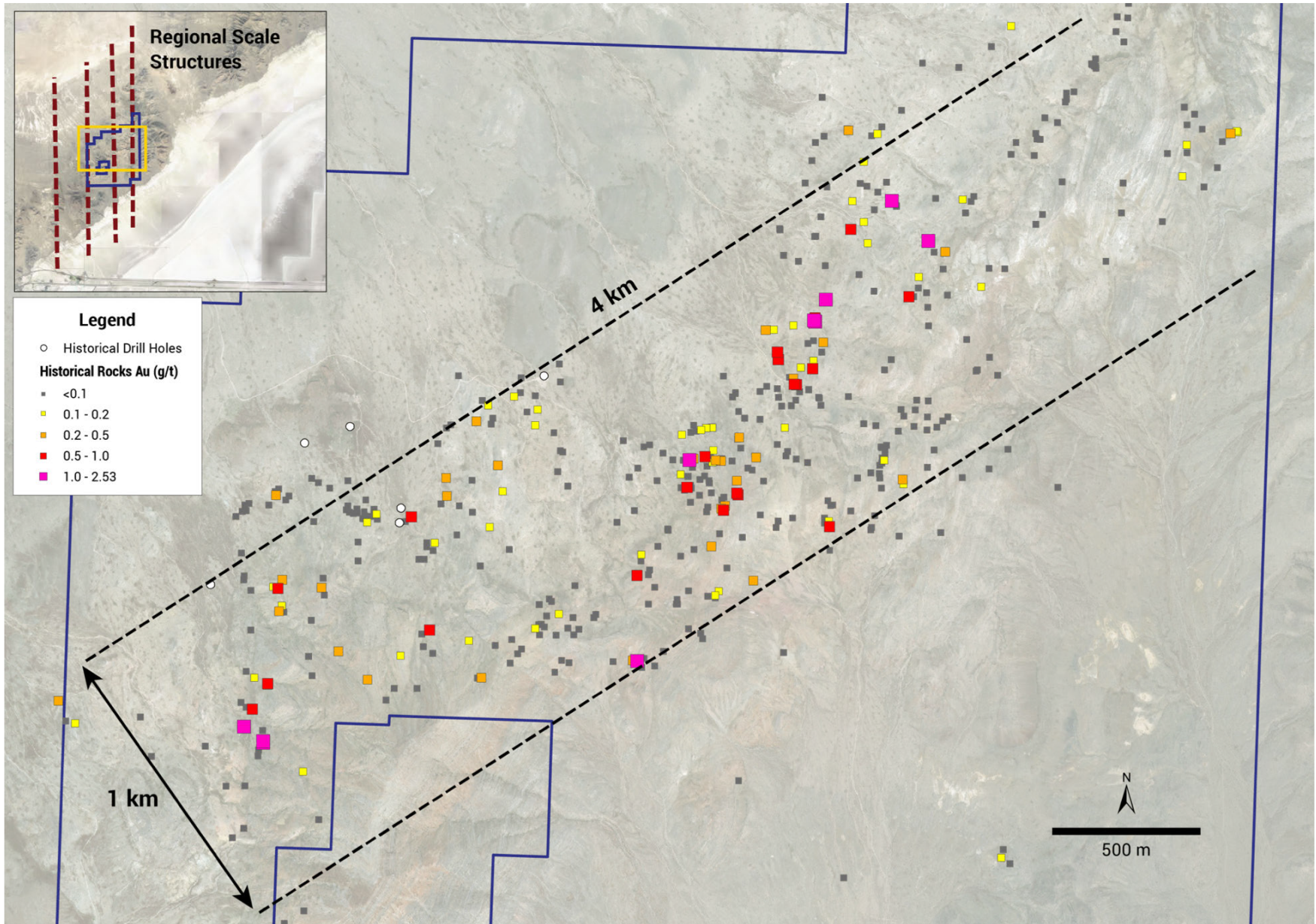


- Acquisition of Speedway and West Mercur projects in western Utah
- Carlin-style gold mineralization evidenced by samples
- Targets analogous to Newmont's Long Canyon
- Opportunities exist in overlooked anomalies



Speedway – Location & Structures





Large Land Position in good neighborhood

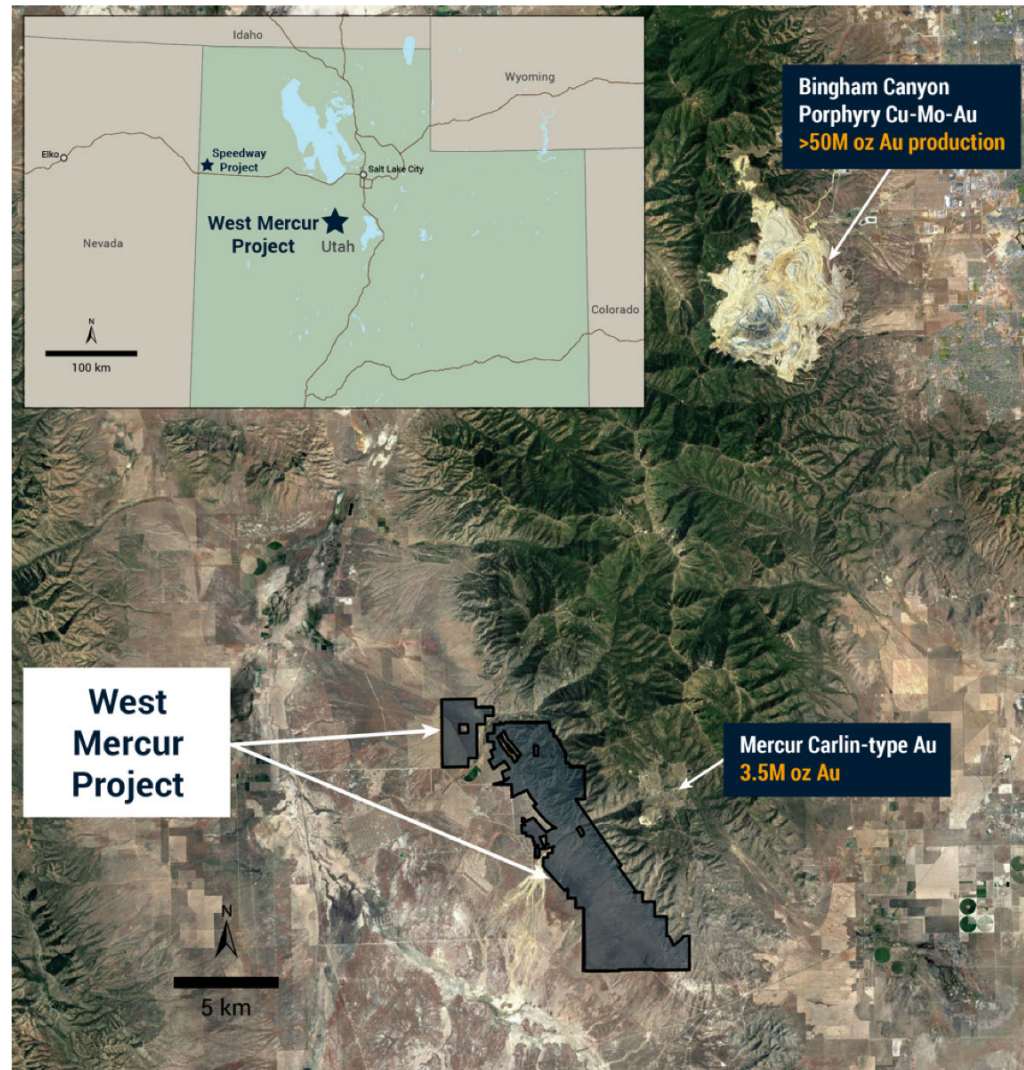
- 60 km SW of Salt Lake City
- 25 km SSW from Bingham Canyon
- 3 km west of the Mercur District

Preferred Geology

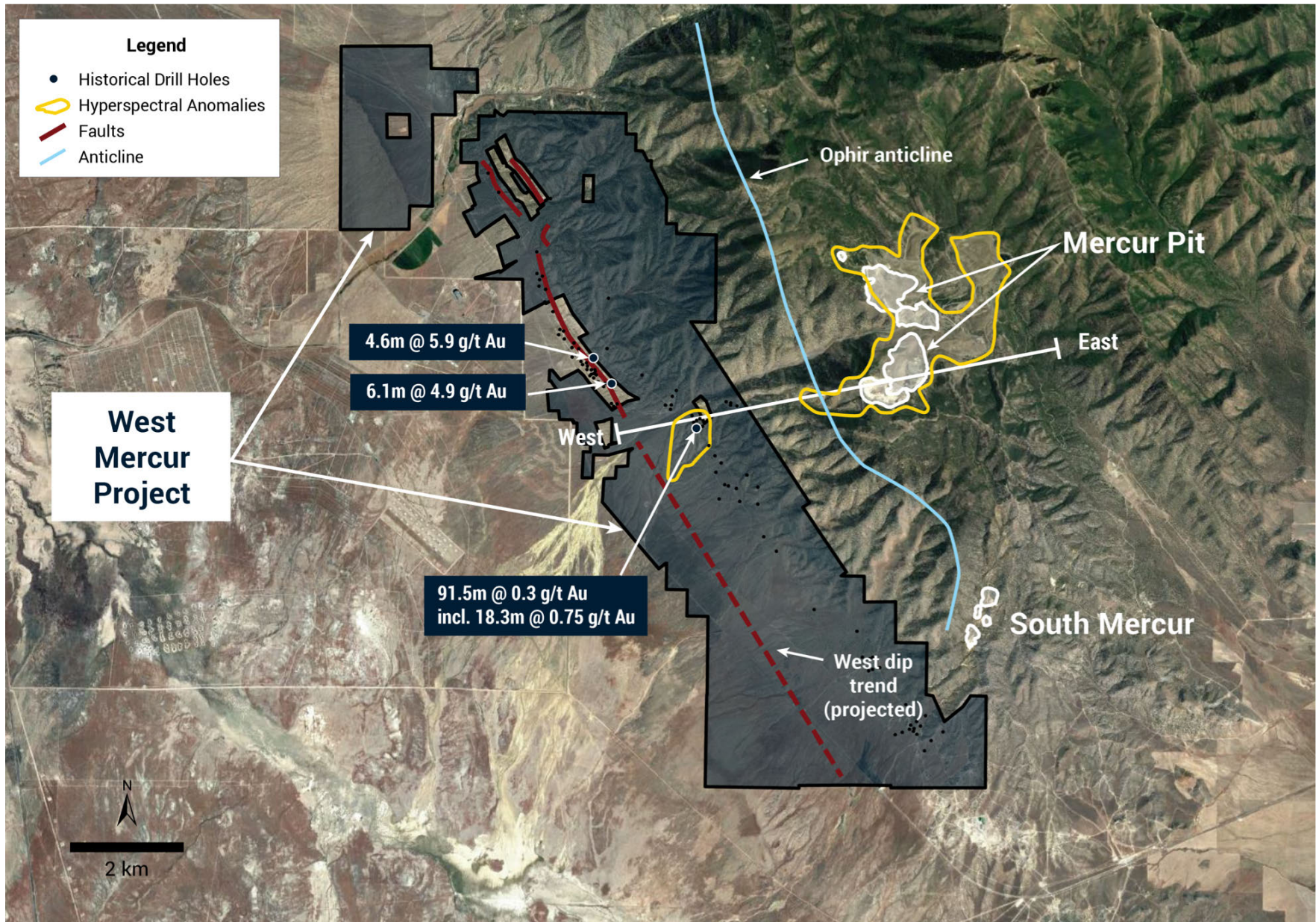
- Same host rocks, structure as Mercur
- Shallow soil/pediment obscures targets

Good Indications

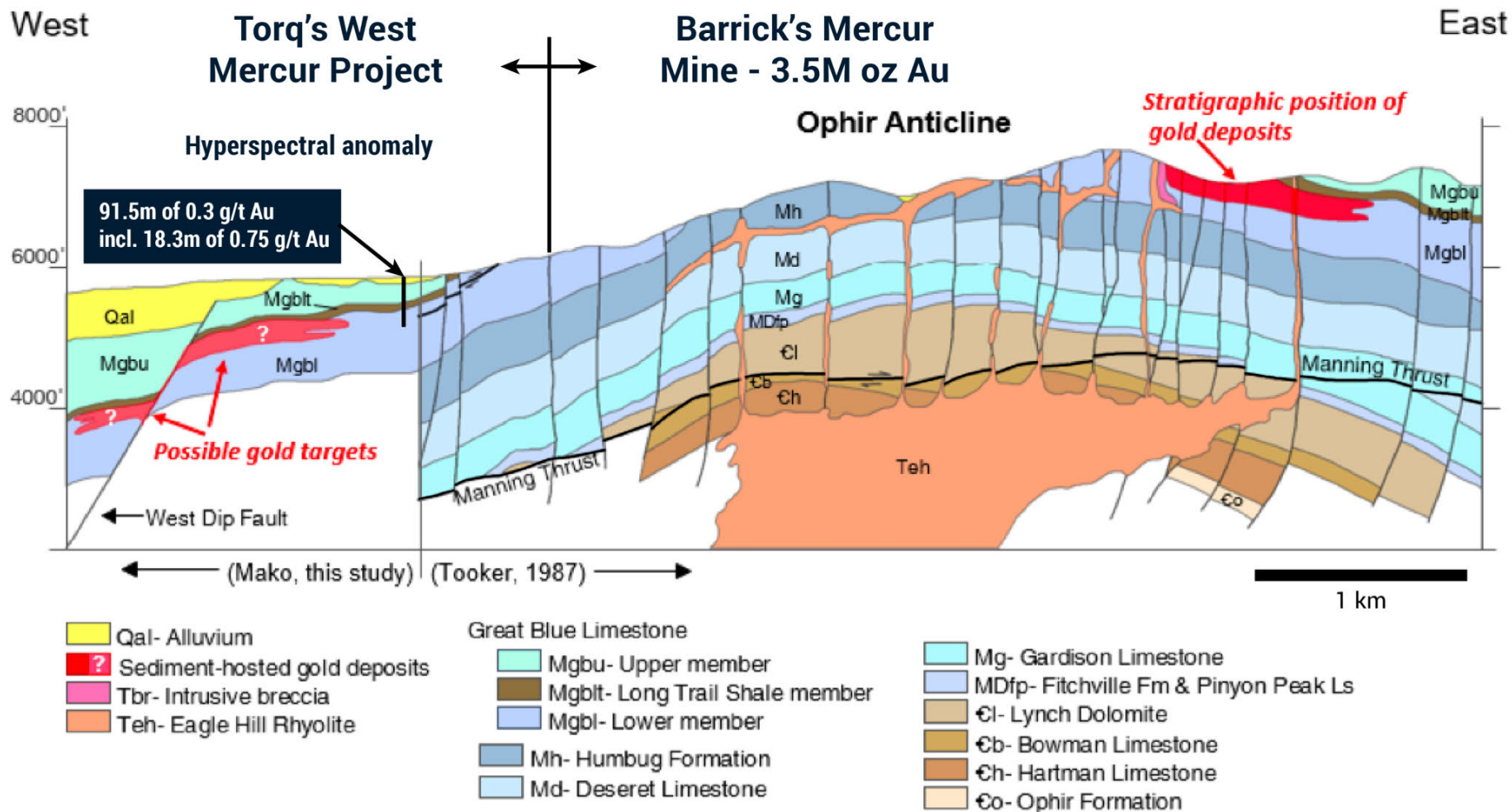
- Historical mining at West Dip
- Remote sensing anomaly
- Historical drillholes with good intercepts



West Mercur – Historic Drilling

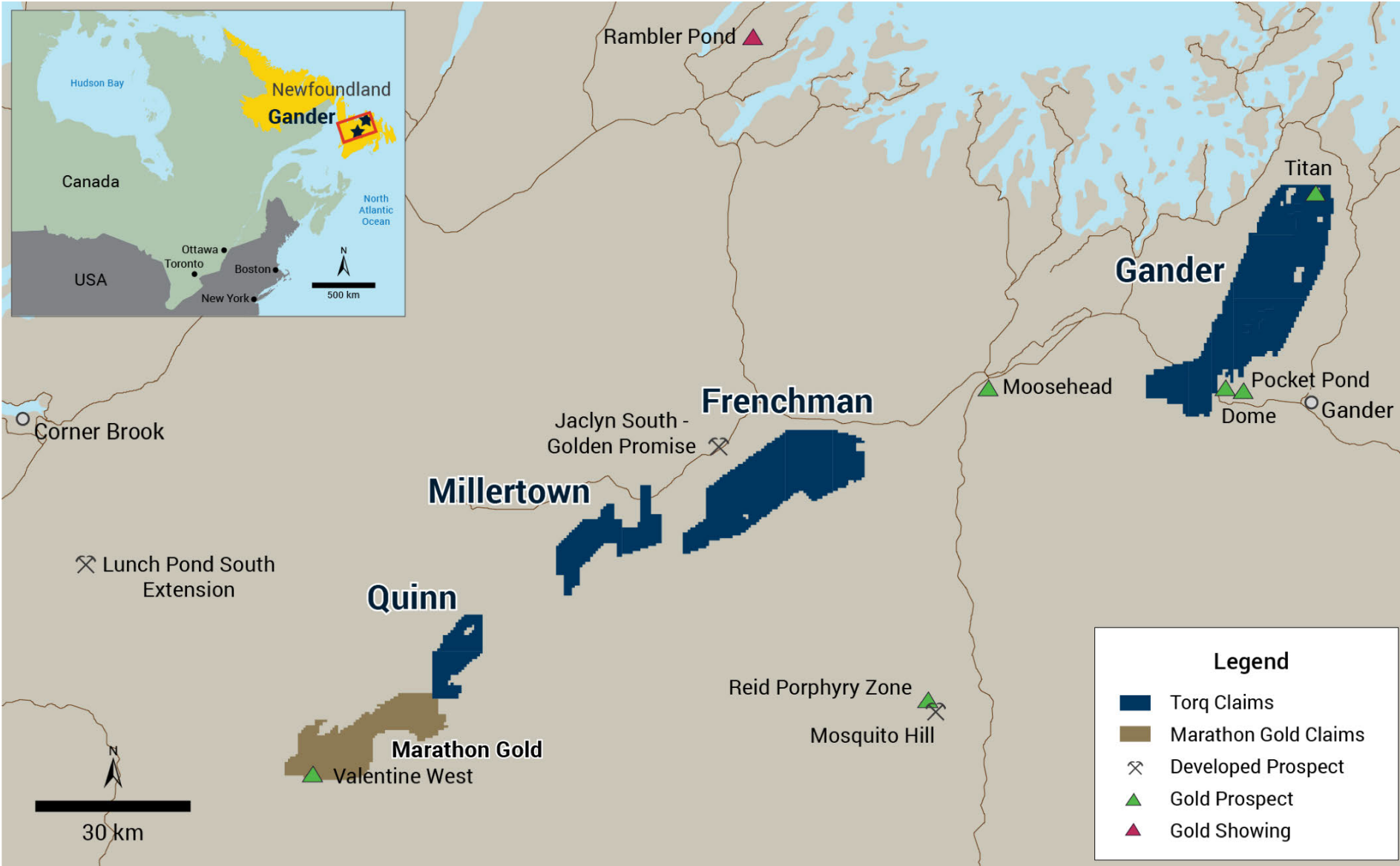


West Mercur – Cross Section

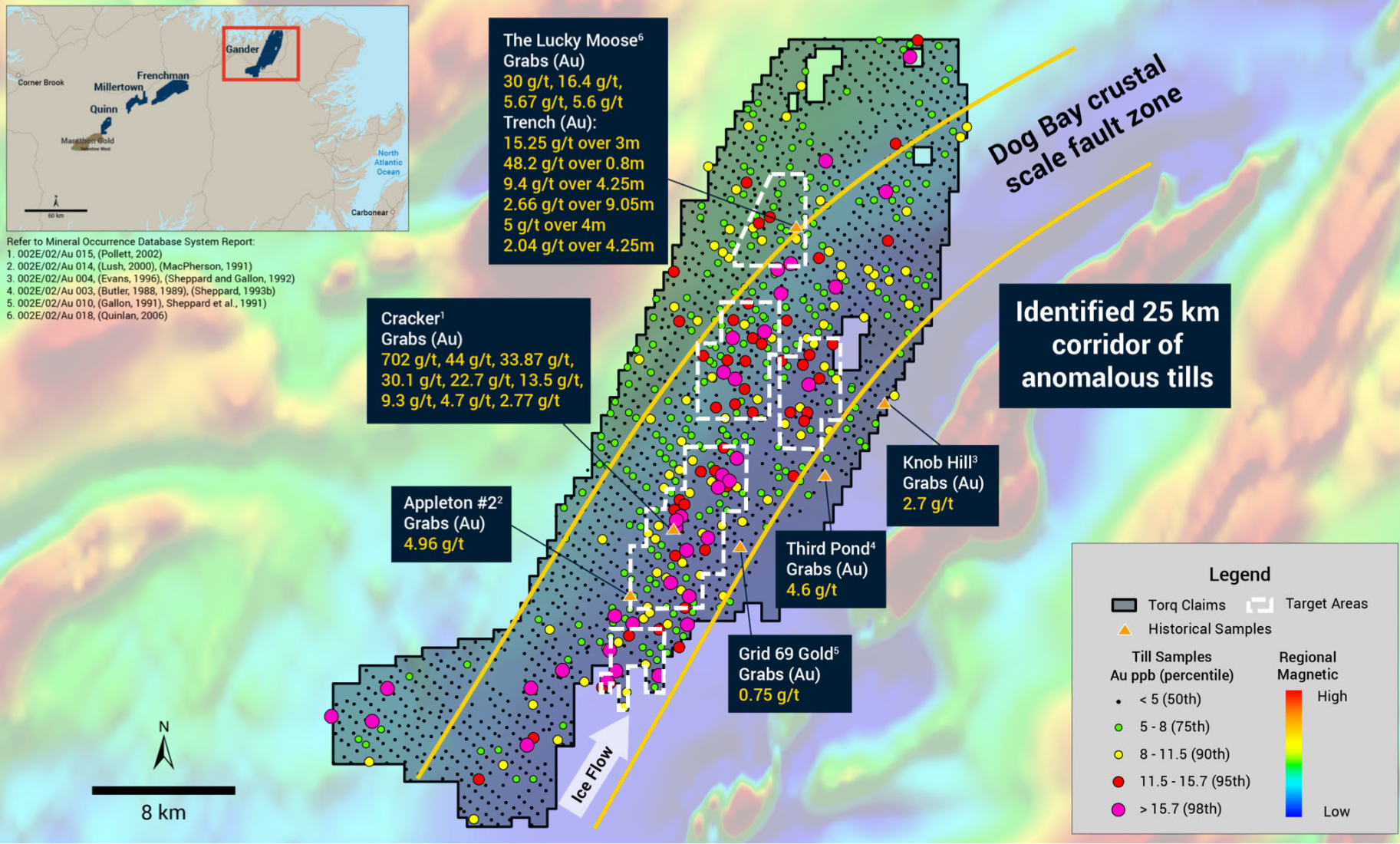


Modified from Tooker, 1987, USGS Open-File Report 87-152

Major Gold Discoveries in Newfoundland

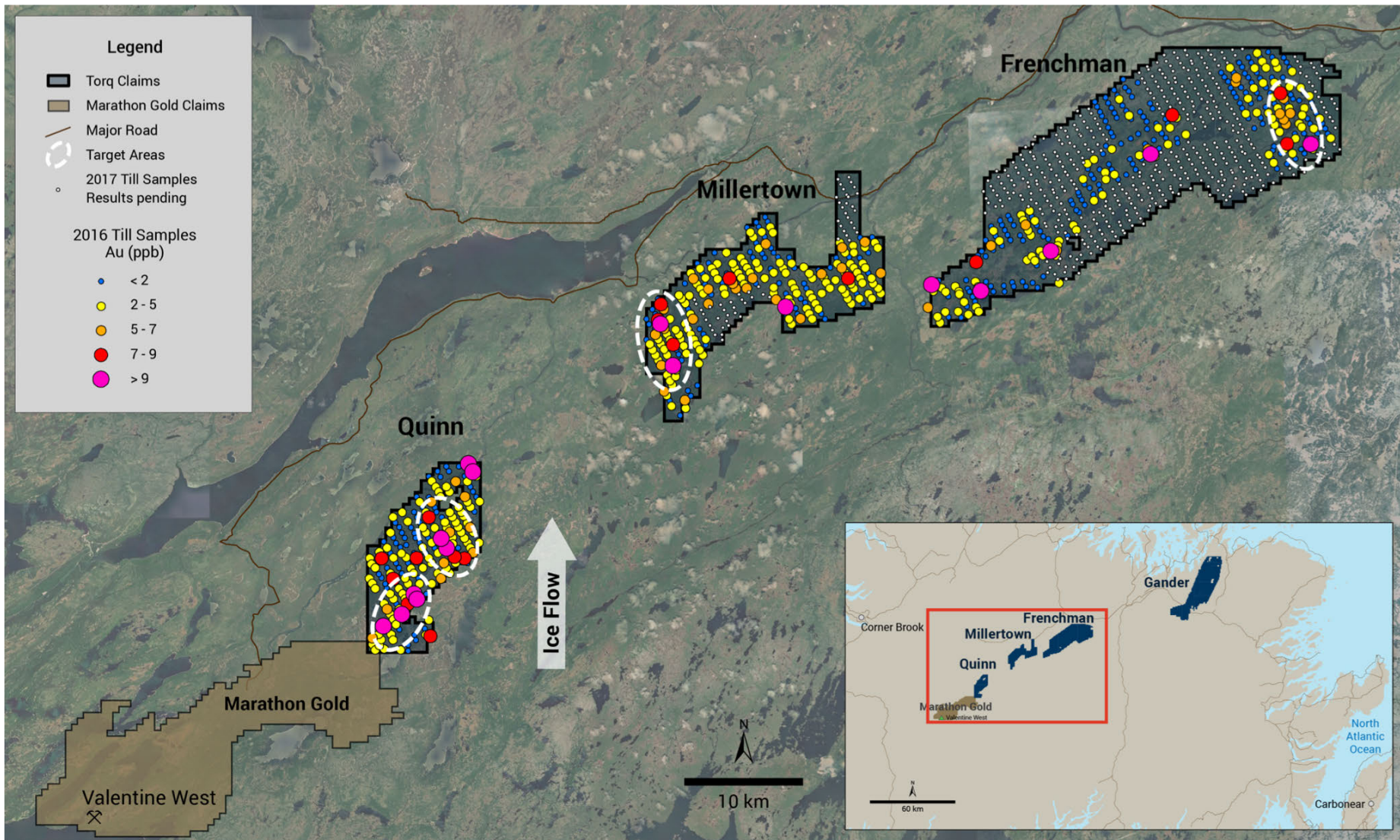


Gander Block: 5 New Gold Anomalies



- Identified 5 target areas in the initial regional till sampling program (Gander block)
- Assay and interpretations continuing into Q3/2018

Next to an Emerging Gold Discovery



- Identified 4 target areas in the initial regional till sampling program (Quinn, Millertown & Frenchman)
- Follow up targeting will be completed in Q3/2018

- Proven management & technical team
- \$13M treasury
- Building a district-scale discovery portfolio with recent acquisitions in Utah
- District-scale land position with active exploration in Newfoundland
- High insider ownership
- Track record of success in the discovery and monetizing of mining assets for shareholder





TSX.V : TORQ | OTCQX : TRBMF

600 -1199 West Hastings Street
Vancouver, BC, Canada V6E 3T5

Phone: 778.729.0500
Fax: 778.729.0650
Toll Free: 1.800.863.8655

Email: info@torqresources.com
Web: www.torqresources.com

