



Evaluating Underground Exploitation Potential of High Grade Mineralization Historical Intercepts Include 862 g/t Ag and 3.98 g/t Au over 41.9m

BUENOS AIRES – August 2, 2018, - **AbraPlata Resource Corp.** (TSX.V:ABRA; OTC: ABBRF; Frankfurt: 1AH) ("AbraPlata" or the "Company") is pleased to announce an update on its Diablillos property, located in northwestern Argentina. The Company has been conducting a review of historical drill data to determine if higher grade silver and gold zones could potentially be exploited using underground mining methods. An underground mining approach could entail significantly less initial capital than the large open pit approach contemplated in the Company's 2018 Preliminary Economic Analysis ("PEA") on the Diablillos project. The PEA demonstrated that Diablillos has the potential to produce an average of 9.8 million silver-equivalent ounces per year over an eight year mine with robust economics. Building such a large operation would require estimated initial capital of US\$293 million. (Refer to technical report filed April 16, 2018, on SEDAR.com for full details of the PEA.)

The comprehensive drill database review by AbraPlata follows the identification by Nick Tate, the Company's consulting geologist and epithermal specialist, that high grade mineralized cores are strongly correlated with steeply dipping, tabular hydrothermal breccia bodies in the main Oculito deposit (Figure 1). Historical drilling, which totals about 88,000m in 450 drill holes, intercepted these breccias in numerous drill holes with the best mineralization being encountered at the intersection of the Main Breccia Zone and the Cross Breccia Zone.

Highlights of historical drill the core of the Oculito deposit are provided in Table 1. The collars of the drill holes listed in Table 1 cover a strike length of over 400 metres and a width of over 200 metres, suggesting that Oculito has a thick, high grade core where there is pervasive brecciation.

Table 1 - Historical drill intercepts from the high grade core of the Oculito Deposit

Hole	Collar X-Coord.	Collar Y-Coord.	Dip	From (m)	To (m)	Interval (m)	Silver (g/t)	Gold (g/t)	AgEq (g/t)	AuEq (g/t)
RC-97-096	3,418,123	7,201,889	-90	120.0	152.0	32.0	461	2.27	631	8.41
DDH-93-001	3,418,275	7,201,932	-60	125.45	223.90	98.5*	861	3.98	1,160	15.47
<i>including</i>				139.55	152.12	12.6	6,183	1.46	6,292	83.89
<i>including</i>				164.85	182.00	17.2	89	13.54	1,104	14.73
RC-97-047	3,418,332	7,201,888	-71	207.0	217.0	10.0	149	8.13	758	10.11
DDH-08-078	3,418,103	7,201,989	-52	4.1	13.2	9.1	160	3.88	451	6.02
and				174.0	192.0	18.0	1,547	0.31	1,571	20.94
DDH-97-005	3,418,315	7,202,001	-90	143.0	170.8	27.7	2,192	0.45	2,226	29.68
<i>including</i>				148.0	158.0	10.0	4,470	0.79	4,530	60.39
RC-96-018	3,418,368	7,202,063	-77	140.0	165.0	25.0	3,367	0.24	3,385	45.13
DDH-07-030	3,418,271	7,202,075	-60	117.5	171.5	54.0	1,292	0.46	1,326	17.68
and				186.5	203	16.5	586	1.67	711	9.48
and				212.0	227.0	15.0	335	2.11	493	6.58
DDH-07-032	3,418,295	7,202,075	-60	123.1	189.1	66.0	826	0.47	861	11.48
<i>including</i>				142.6	165.1	22.5	1,246	0.70	1,299	17.32
DDH-97-007A	3,418,318	7,202,151	-75	210.0	220.62	10.6	39	16.63	1,287	17.16
RC-96-028	3,418,367	7,202,211	-65	187.0	232.0	45.0	171	3.21	412	5.50

Notes

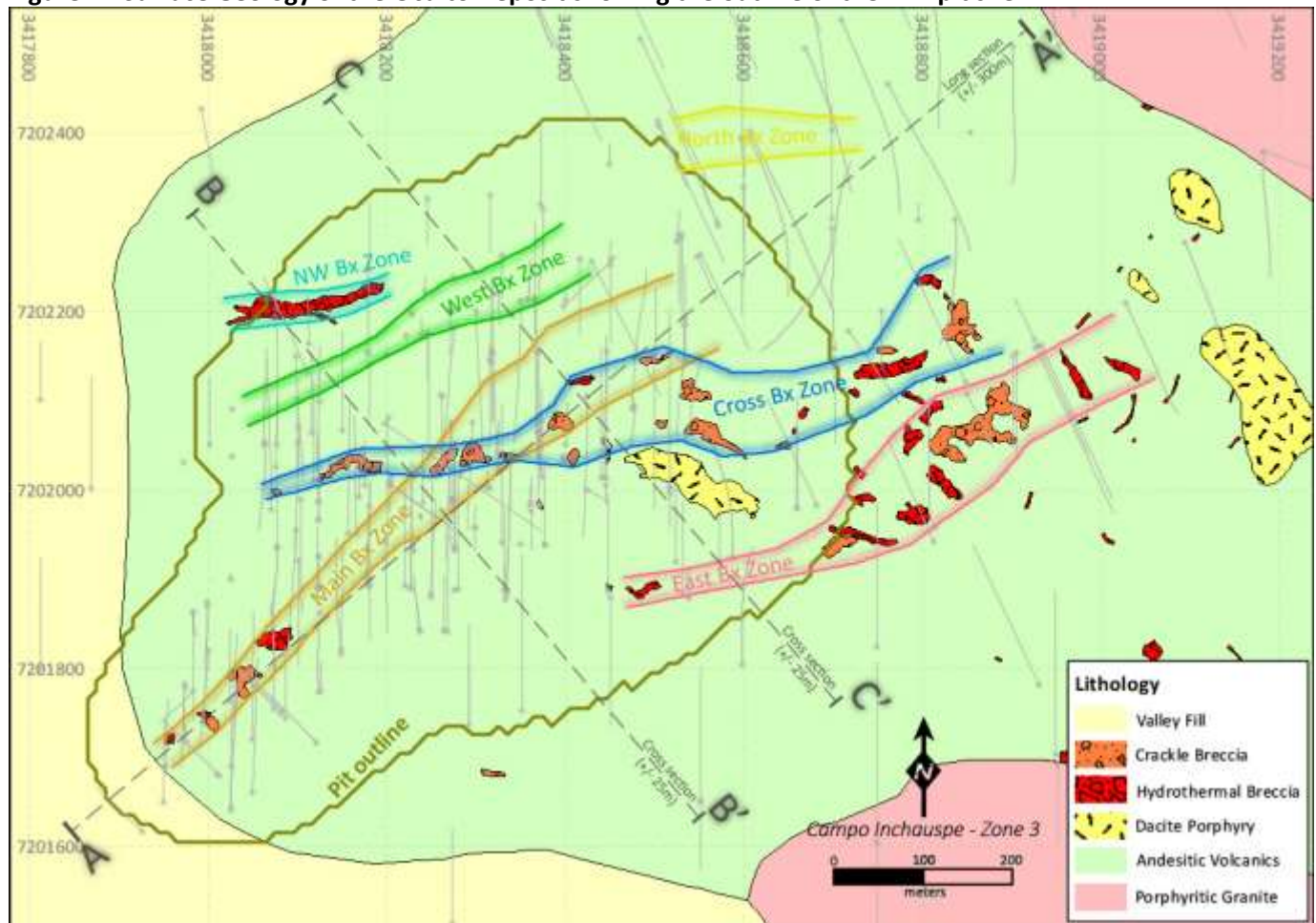
1. Intervals are down-the-hole and do not represent True Widths (* true width of broad intercept in hole DDH-93-001 is estimated to be 42.5% of reported interval, or 41.9m)
2. No grade capping has been applied
3. Equivalent grades (AgEq or AuEq) have been calculated on the basis of Au:Ag = 75:1

“The implications from the improved geological understanding of the Oculito deposit are that the near-vertical breccia bodies are largely untested at depth and, as indicated in our April 30, 2018, news release, we believe that Oculito has the potential to host high grade gold mineralization below the current mineral resource,” commented Willem Fuchter, President and CEO of AbraPlata. “An underground option may indicate a processing plant of reduced capacity and increased recoveries due to a higher grade feed, and would require less capital. In addition, significant pre-stripping of waste material would no longer be necessary, resulting in further savings and the high grade zones at depth can then be tested from underground. Furthermore, in the event that Oculito makes sense as an underground operation, then the potential high grade gold mineralization at depth becomes significantly more compelling than in an open pit approach. While we believe the open pit approach to Diablillos remains a viable option, the Company plans to conduct additional work to assess if an underground mining approach that is less capital intensive may be a viable alternative and if a PEA on such a scenario is warranted.”

Diablillos Overview

The Diablillos property hosts high sulphidation epithermal Ag-Au mineralization associated with a large epithermal system underlying the property. The great majority of resources reported from the property are located in the Oculito deposit (Figure 1) which is centered over the core of the epithermal system.

Figure 1 - Surface Geology of the Oculito Deposit showing the outline of the PEA pit shell



The higher grade mineralization at Oculito tends to be structurally controlled. AbraPlata has done considerable work over the past year mapping the surface and re-logging of key drill holes in order to interpret the structural geology at Oculito and arrive at a geological and geometrical model of the mineralized zones. The most important mineral bearing zones are the Main, Cross, and West Zones, although mineralization has been intercepted in the other zones. In addition, breccia zones have been also identified in the satellite occurrences surrounding Oculito, notably at, Fantasma, Laderas, Enigmatica, Concepcion, and Nebulosa.

More specifically, mineralization appears to be controlled by NW- and NE-trending structures along which significant tabular zones of hydrothermal breccia have been developed that, in turn, host the high grade mineralization. To date, six specific breccia zones have been identified at Oculito: Main Breccia Zone; Cross Breccia Zone; East Breccia Zone; West Breccia Zone; NW Breccia Zone; and North Breccia Zone (Figure 1). The Main Breccia Zone and the Cross Breccia Zone have an estimated strike extent of at least 800m. The East and West Zones have strikes of 650m and 450m respectively. The Main and Cross Breccia Zones form a continuous zone of mineralization which extends for more than 1000m (Figure 2), and a significant vertically dipping pipe-like body over 80m in diameter and extending some 150m in depth lies at the intersection of the Main and Cross Zones (Figure 3a). This mineralized plug is open at depth. Likewise, the general lack of drilling below the current PEA pit shell together with the results of few deep holes that have been continued below the current pit depth such as DDH-97-007A (see Figure 3b) indicate the considerable potential for the definition of additional resources at depth in the basement rocks.

Figure 2 - Long Section A-A' of the Oculito deposit showing drill intercepts through the Main and Cross Breccia Zones (looking northwest) with intercepts over 200 g/t Ag and 2.5 g/t Au indicated

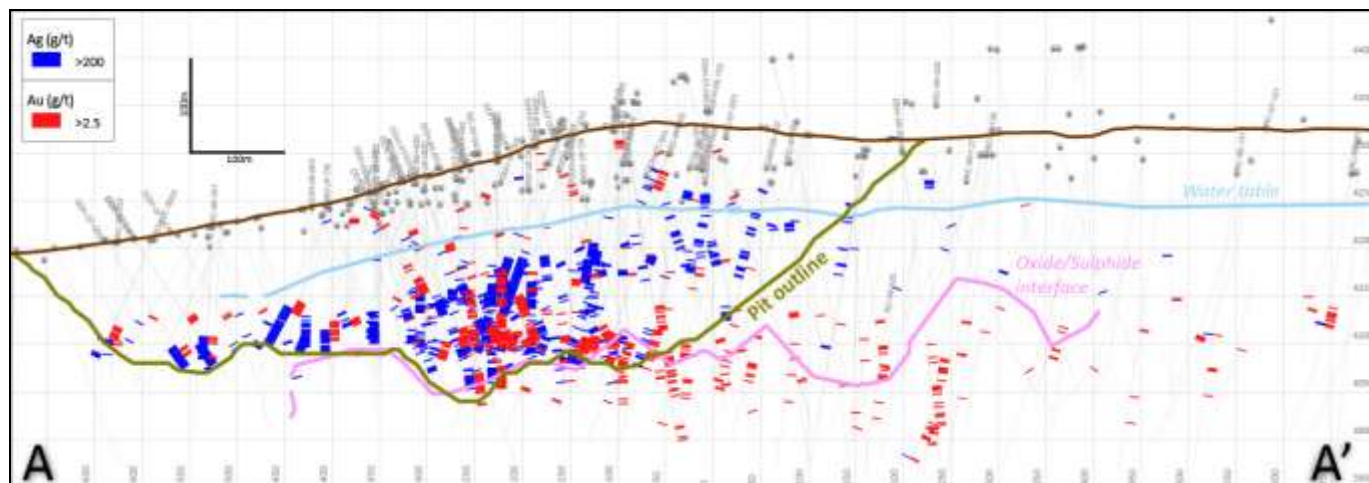


Figure 3a – Section B-B' through the pipe-like body at the intersection of the Main and Cross Breccia Zones

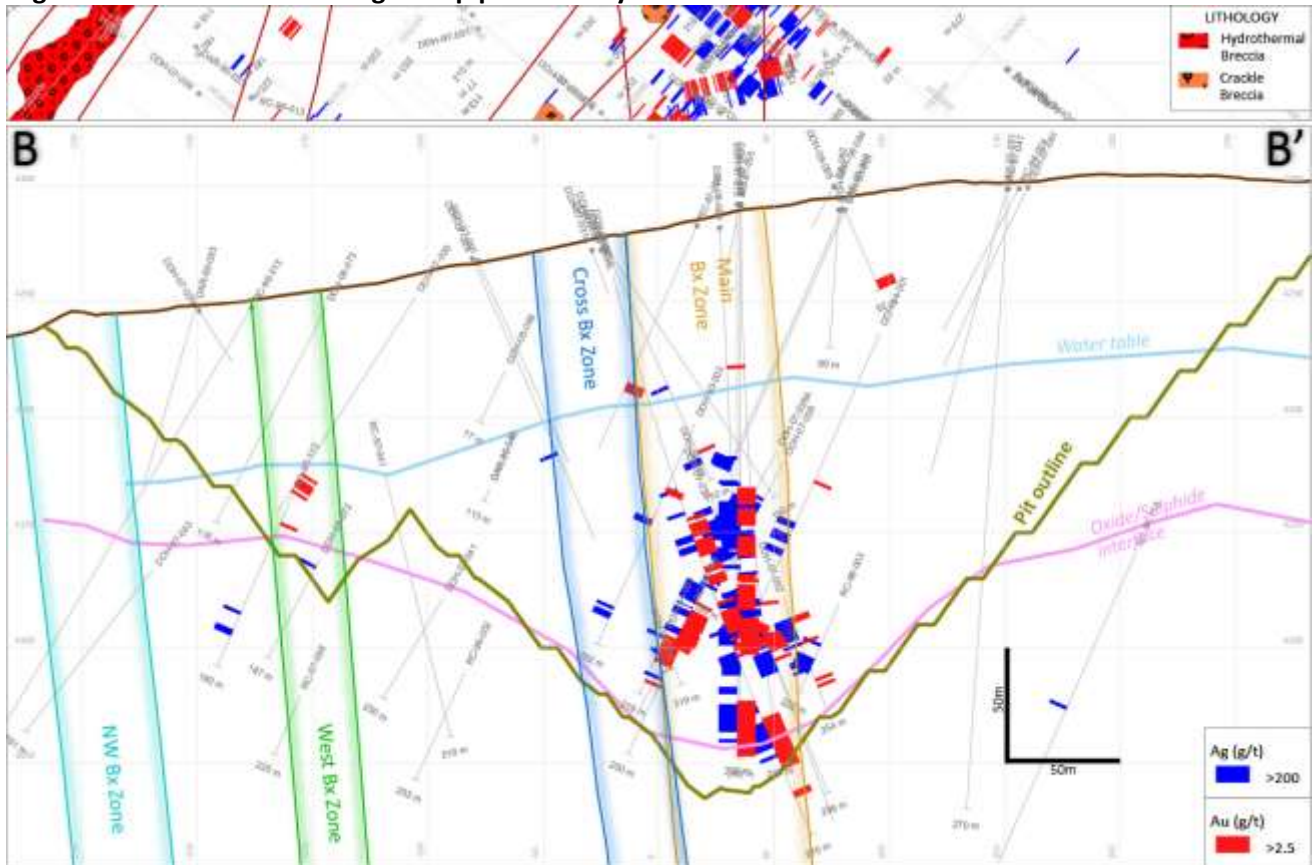
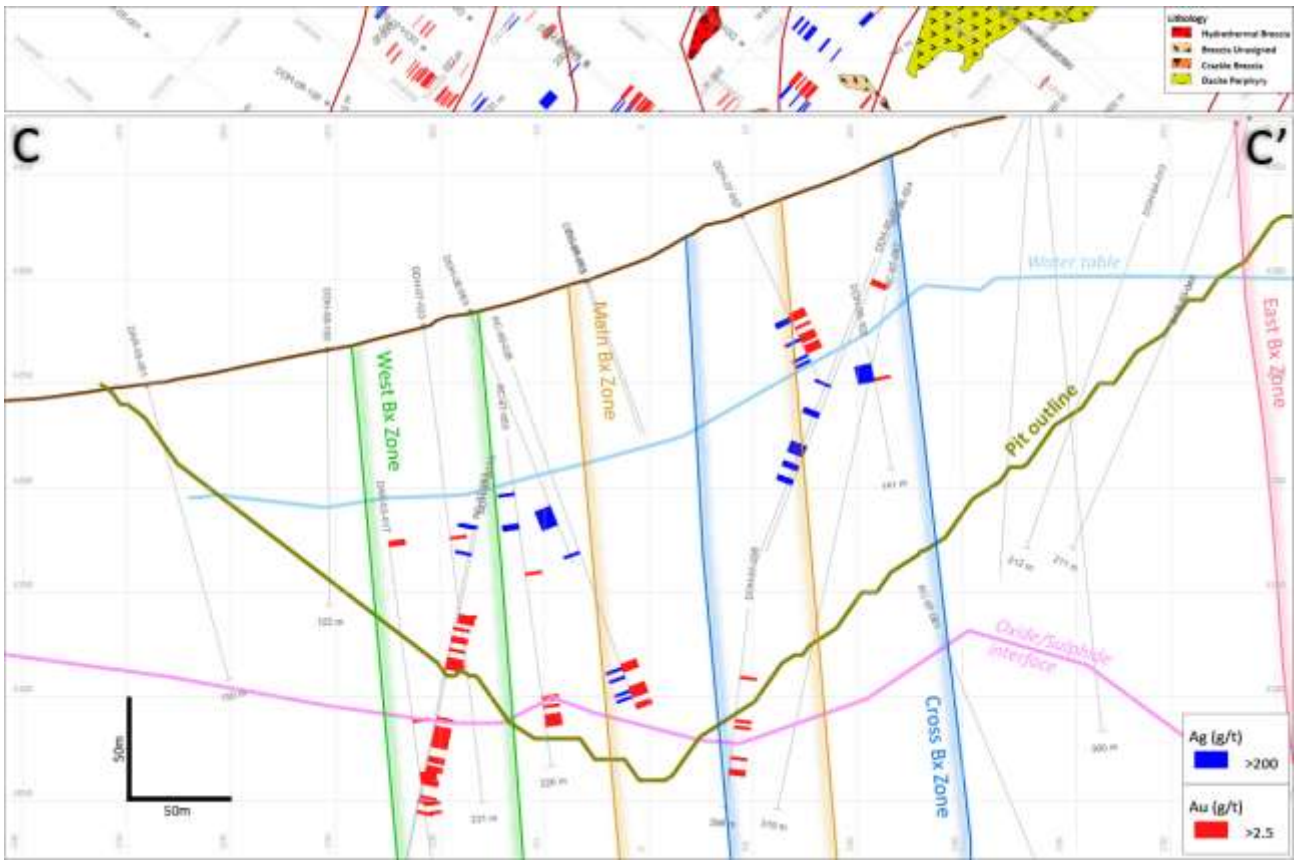


Figure 3b – Section C-C' through the West Breccia Zone, showing the high grade gold potential below the pit



Given the fact that mineralization at Oculito is of an epithermal, high sulphidation nature, mineralization may extend for hundreds of meters below the current pit shell. This creates the potential of increasing resources from Oculito significantly, especially gold resources. High grade gold-rich zones are associated with hydrothermal breccias at the interface of the basement rocks with the overlying volcanics and volcanoclastics and confined to tight structures within the basement. Oculito has multiple characteristics of a gold deposit with a silver cap.

The long section through the Main and Cross Zones (Figure 2) shows elevated levels of silver and gold mineralization occurring in a zone that is 5 to 30m in thickness and occurs approximately 90 to 120m below current topography and just below the current water table (blue line on sections), which lies about 80m below the surface. This enriched mineralized zone has been interpreted as a supergene enrichment zone developed just below the water table during emplacement. Numerous high grade silver and gold drill intercepts have been encountered in this zone with grades reporting over 200g/t AgEq. Sample intercepts from historical drilling of the high grade silver and gold mineralization in the enrichment zone are shown in Table 2.

Table 2 - Significant intercepts in the supergene enrichment zone

Hole	Collar X-Coord.	Collar Y-Coord.	Dip	From (m)	To (m)	Interval (m)	Silver (g/t)	Gold (g/t)	AgEq (g/t)	AuEq (g/t)
DDH-94-003	3,418,228	7,201,892	-60	145.55	158.33	12.8	436	0.29	457	6.10
RC-96-001	3,418,081	7,201,751	-65	120.0	154.0	34.0	510	4.55	851	11.35
RC-96-023	3,418,009	7,201,681	-64	116.0	123.0	7.0	354	3.45	613	8.18
RC-96-029	3,418,716	7,202,177	-73	83.0	91.0	8.0	406	0.75	462	6.16
RC-97-039	3,418,178	7,201,903	-88	125.0	158.0	33.0	494	0.03	496	6.62
<i>including</i>				147.0	155.0	8.0	992	0.06	996	13.28
RC-97-043	3,418,178	7,202,151	-90	102.0	106.0	4.0	21	7.24	564	7.52
RC-97-050	3,418,315	7,202,142	-70	98.0	113.0	15.0	1,274	0.02	1,275	17.00
RC-97-054	3,418,239	7,201,985	-60	78.0	82.0	4.0	60	11.33	909	12.12
RC-97-059	3,418,239	7,202,171	-83	97.0	102.0	5.0	39	5.35	440	5.87
RC-97-064	3,418,365	7,202,213	-75	92.0	105.0	13.0	445	1.68	571	7.61
RC-97-083	3,418,447	7,202,154	-72	97.0	101.0	4.0	519	0.07	524	6.99
DDH-97-004	3,418,179	7,201,981	-90	109.35	129.0	19.7	348	0.40	378	5.05
DDH-97-006	3,418,370	7,202,066	-77	122.3	137.5	15.2	731	0.47	766	10.21
DDH-97-015	3,418,271	7,201,989	-90	119.2	190.8	71.6	163	3.73	443	5.90
DDH-99-017	3,418,272	7,201,988	-90	137.6	151.4	13.8	601	0.25	620	8.27
DDH-99-021	3,418,179	7,201,901	-90	142.0	153.2	11.2	642	0.06	647	8.62
DAR-03-016	3,418,312	7,202,001	-78	117.0	128.0	11.0	922	0.01	922	12.30
DDH-07-038A	3,418,249	7,201,883	-53	140.0	150.5	10.5	401	0.28	422	5.62
DDH-07-047	3,418,049	7,201,720	-45	121.5	127.6	6.0	157	4.19	471	6.28
DDH-07-049	3,418,049	7,201,660	-45	154.7	184.7	30.0	716	0.81	777	10.36
DDH-07-050	3,418,024	7,201,640	-45	158.8	185.8	27.0	893	1.95	1,039	13.86
DDH-07-051	3,418,024	7,201,690	-45	117.5	126.5	9.0	125	5.61	546	7.28
DDH-07-055A	3,417,973	7,201,783	-55	108.0	120.0	12.0	23	4.79	382	5.09
DDH-07-060A	3,418,475	7,202,090	-87	87.0	96.0	9.0	570	0.14	581	7.75
DDH-08-063	3,418,349	7,202,211	-60	105.8	116.3	10.5	393	0.12	402	5.36
DDH-08-065	3,418,199	7,201,944	-90	153.2	165.2	12.0	312	0.61	358	4.77
DDH-08-066	3,418,177	7,201,897	-63	139.5	148.5	9.0	722	0.14	732	9.76
DDH-08-077	3,418,075	7,202,025	-50	94.0	115.0	21.0	111	4.29	433	5.77
DDH-08-080	3,418,124	7,201,862	-90	128.4	413.4	15.0	612	0.16	624	8.32
DDH-08-089	3,418,237	7,201,971	-86	125.0	135.5	10.5	482	0.23	499	6.66
DDH-08-098	3,418,221	7,202,171	-90	98.9	106.2	7.3	54	11.16	891	11.88
DDH-08-102	3,418,477	7,202,093	-72	87.5	97.0	9.5	584	1.71	712	9.49

Notes: 1. Intervals are down-the-hole and do not represent True Widths

2. No grade capping has been applied

3. Equivalent grades (AgEq or AuEq) have been calculated on the basis of Au:Ag = 75:1

A gold-rich zone lies at an angle to the silver zone, and is generally better developed at depth. Much of the gold in this zone is hosted by breccia bodies both within the NE-trending structures and also in breccias developed at the intersection of the basement rocks and overlying volcanics and volcanoclastics. At depth, the gold generally occurs in the vicinity of the oxide-sulphide interface (maroon line on the sections) and is interpreted to represent hypogene mineralization. Examples of historical drill intercepts in breccia zones of the gold rich zones are shown in Table 3.

Table 3 - Gold intercepts near the oxide-sulphide interface

Hole	Collar X-Coord.	Collar Y-Coord.	Dip	From (m)	To (m)	Interval (m)	Silver (g/t)	Gold (g/t)	AgEq (g/t)	AuEq (g/t)
RC-96-003	3,418,268	7,201,840	-60	206.0	214.0	8.0	767	0.81	828	11.04
RC-96-005	3,418,369	7,202,154	-64	208.0	242.0	34.0	61	3.64	334	4.46
<i>including</i>				234.0	242.0	7.0	69	8.77	727	9.69
DDH-93-004	3,418,328	7,201,939	-52	238.55	253.85	15.3	197	4.61	543	7.23
DDH-94-001	3,418,279	7,201,888	-60	192.84	218.54	25.7	254	4.54	595	7.93
and				236.57	242.86	6.3	416	1.86	555	7.40
DDH-94-003	3,418,219	7,201,892	-60	187.51	202.11	14.6	140	5.37	542	7.23
DDH-94-004	3,418,260	7,202,104	-65	192.3	211	18.7	208	4.66	557	7.43
DDH-97-007A	3,418,318	7,202,151	-75	210.0	220.6	10.6	39	16.67	1,289	17.19
DDH-97-015	3,418,271	7,201,989	-90	215.0	237.8	22.8	272	13.18	1,260	16.80
RC-97-048	3,418,227	7,201,889	-60	179.0	195.0	16.0	168	3.56	435	5.80
RC-97-050	3,418,315	7,202,142	-70	192.0	210.0	18.0	126	5.01	502	6.69
and				214.0	223.0	9.0	413	0.71	466	6.21
RC-97-056	3,418,273	7,201,989	-90	185.0	192.0	7.0	357	5.38	761	10.15
RC-97-063	3,418,365	7,202,212	-80	187.0	202.0	15.0	17	7.00	542	7.22
RC-97-069	3,418,450	7,202,251	-73	219.0	226.0	7.0	39	5.95	485	6.47
RC-97-101	3,418,900	7,202,496	-65	245.0	250.0	5.0	9	6.82	520	6.93
RC-97-117	3,418,749	7,201,606	-60	271.0	275.0	4.0	17	13.70	1,044	13.92
RC-98-125	3,418,370	7,202,540	-60	203.0	208.0	5.0	45	5.10	428	5.71
and				217.0	222.0	5.0	32	4.69	384	5.12
RC-98-127	3,418,483	7,202,504	-60	222.0	231.0	9.0	40	3.26	284	3.79
RC-98-131	3,418,713	7,202,673	-60	234.0	238.0	4.0	91	4.26	410	5.47
RC-98-135	3,418,604	7,202,394	-60	327.0	341.0	14.0	29	5.10	411	5.48
and				368.0	370.0	2.0	192	61.17	4,780	63.73
<i>including</i>				369.0	370.0	1.0	327	116.00	9,027	120.36
RC-98-141	3,418,780	7,202,780	-60	169.0	188.0	19.0	94	4.56	436	5.81
DAR-03-016	3,418,312	7,202,001	-78	204.0	222.0	18.0	165	3.33	415	5.53
<i>including</i>				204.0	210.0	6.0	204	4.96	576	7.68
DAR-03-017	3,418,329	7,202,262	-80	209.0	213.0	4.0	16	5.64	439	5.85
DAR-05-002	3,418,416	7,202,258	-70	243.0	246.0	3.0	61	7.18	599	7.99
DDH-07-022	3,418,325	7,202,019	-65	223.0	242.5	19.5	159	5.01	534	7.12
DDH-07-024	3,418,299	7,202,200	-55	207.6	218.1	10.5	199	4.63	546	7.28
DDH-07-029	3,418,200	7,202,080	-60	199.5	210.0	10.5	204	7.12	738	9.85
DDH-07-038A	3,418,249	7,201,883	-53	200.0	212.0	12.0	109	4.03	411	5.48
DDH-08-063	3,418,349	7,202,211	-60	201.8	233.3	31.5	213	2.72	417	5.56
DDH-08-067A	3,418,571	7,202,295	-65	269.0	273.5	4.5	21	4.97	394	5.25
and				299.0	303.5	4.5	16	4.55	357	4.76

Notes

1. Intervals are down-the-hole and do not represent True Widths
2. No grade capping has been applied
3. Equivalent grades (AgEq or AuEq) have been calculated on the basis of Au:Ag = 75:1

The Diablillos property has an Indicated Mineral Resource Estimate of **27.1 million tonnes** grading **93.1g/t Ag** and **0.84g/t Au** containing **80.9 million oz Ag and 732,000 oz Au** (136Moz AgEq or 1.81Moz AuEq using Au:Ag of 75:1). Further details can be found in technical reports from November 2016 and April 2018 which are available from the Company's profile on SEDAR.com.

Qualified Person

All scientific and technical information in this news release has been approved by Willem Fuchter, PhD PGeo, President & CEO of AbraPlata Resource Corp and a qualified person as defined by National Instrument 43-101.

About AbraPlata

AbraPlata is a junior mining exploration company focused on delivering shareholder returns by unlocking mineral value in Argentina. The Company's experienced management team has assembled an outstanding portfolio of gold, silver and copper exploration assets, and is focused on advancing its flagship Diablillos silver-gold property through the various stages of feasibility. In addition, AbraPlata owns the highly prospective Cerro Amarillo property with its cluster of five mineralized Cu-(Mo-Au) porphyry intrusions located in a mining camp hosting the behemoth El Teniente, Los Bronces, and Los Pelambres porphyry Cu-Mo deposits. As well, the Company is exploring Aguas Perdidas, its wholly owned Patagonia-style epithermal Au-Ag property.

ON BEHALF OF THE BOARD ABRAPLATA RESOURCE CORP.

"Willem Fuchter"

Willem Fuchter

President & Chief Executive Officer

For further information concerning this news release, please contact:

Willem Fuchter - President & CEO

Tel: +54.11.5258.0920

E-mail: willem@abraplata.com

Rob Bruggeman - Investor Relations

Tel: +1.416.884.3556

Email: rob@abraplata.com

This news release includes certain "forward-looking statements" under applicable Canadian securities legislation. Forward-looking statements are necessarily based upon a number of estimates and assumptions that, while considered reasonable, are subject to known and unknown risks, uncertainties, and other factors which may cause the actual results and future events to differ materially from those expressed or implied by such forward-looking statements. All statements that address future plans, activities, events or developments that the Company believes, expects or anticipates will or may occur are forward-looking information. There can be no assurance that such statements will prove to be accurate, as actual results and future events could differ materially from those anticipated in such statements. Accordingly, readers should not place undue reliance on forward-looking statements. The Company disclaims any intention or obligation to update or revise any forward-looking statements, whether as a result of new information, future events or otherwise, except as required by law.

Neither the TSX Venture Exchange nor its Regulation Services Provider (as that term is defined in the policies of the TSX Venture Exchange) accepts responsibility for the adequacy or accuracy of this release.

For further information about AbraPlata and its projects, please visit the Company's website at www.abraplata.com.