



Island Mountain infill drilling includes 17.56 g/t Au over 11.2 meters on Shaft Zone and 11.95 g/t Au over 22.5 meters at Mosquito Creek

TORONTO, July 26, 2018 /CNW/ - **Barkerville Gold Mines Ltd.** (TSXV: BGM) (the "**Company**" or "**Barkerville**") is pleased to announce additional drilling results from the 50,000-meter 2018 Island Mountain exploration and delineation program at the Company's flagship Cariboo Gold Project. The infill drilling results continue to demonstrate continuity and expansion of modelled vein corridors at both Shaft Zone and Mosquito Creek.

Recent results include three intersections greater than 100 g/t Au including 105 g/t Au over 0.65 meters in hole IM-18-066, 113 g/t Au over 0.50 meters and 104.5 g/t Au over 1.15 meters in hole IM-18-081. Detailed drilling results, a drill hole location plan map and vertical section are presented at the end of this release.

[Link To 3D Model](#)

To view the 3D model with the most recent drills from this news release click the link above & then click on "3D resource Model", in addition to viewing our model you can also take a full virtual tour of the project by clicking "Cariboo Gold Project".

Selected Drilling Highlights:

- IM-18-062: 37.28 g/t Au over 4.30 meters
- IM-18-065: 20.79 g/t Au over 8.00 meters
- IM-18-066: 10.01 g/t Au over 7.30 meters
- IM-18-070: 42.47 g/t Au over 2.20 meters
- IM-18-074: 11.95 g/t Au over 22.5 meters
- IM-18-081: 32.02 g/t Au over 7.55 meters
- IM-18-087: 17.56 g/t Au over 11.20 meters
- IM-18-090: 35.77 g/t Au over 6.00 meters

Vein Zone Continuity on Island Mountain

The intervals noted above were intersected in holes designed to infill and expand mineralized vein corridors on Island Mountain down to depths of 500 meters. The program consisted of 50,000 meters drilled in 162 holes in the Shaft Zone and Mosquito Creek on Island Mountain. **Vein corridors are defined as a high-density network of mineralized quartz veins within the sandstones.** Mineralized quartz veins on the Cariboo Gold Project are overall sub-vertical dip and northeast strike. These corridors have been defined from surface to a vertical depth of 600 meters and remain open for expansion at depth and down plunge. Gold grades are intimately associated with vein-hosted pyrite as well as pyritic, intensely silicified wall rock haloes in close proximity to the veins. A cross section of the vein corridor for IM-18-087 is presented below.

Chris Lodder, President and CEO, comments. "Exploration drill results from Mosquito Creek

demonstrate strong potential to extend Island Mountain mineralization to the North West for several kilometers. Presently, exploration and infill drilling is focusing on Cow Mountain where mineralization is open at depth and on strike to the South East towards Barkerville Mountain."

Qualified Persons

Exploration activities at the Cariboo Gold Project are administered on site by the Company's Project Geologists, Kyle Orr and Felipe Castaneda. As per National Instrument 43-101 Standards of Disclosure for Mineral Projects, Maggie Layman, P. Geo. Vice President Exploration, is the Qualified Person for the Company and has prepared, validated and approved the technical and scientific content of this news release. The Company strictly adheres to CIM Best Practices Guidelines in conducting, documenting, and reporting its exploration activities on the Cariboo Gold Project.

Quality Assurance – Quality Control

Once received from the drill and processed, all drill core samples are sawn in half, labelled and bagged. The remaining drill core is subsequently stored on site at the Company's secure facility in Wells, BC. Numbered security tags are applied to lab shipments for chain of custody requirements. The Company inserts quality control (QC) samples at regular intervals in the sample stream, including blanks and reference materials with all sample shipments to monitor laboratory performance. The QAQC program was designed and approved by Lynda Bloom, P. Geo. of Analytical Solutions Ltd., and is overseen by the Company's Qualified Person, Maggie Layman, P. Geo, Vice President Exploration.

Drill core samples are submitted to ALS Geochemistry's analytical facility in North Vancouver, British Columbia for preparation and analysis. The ALS facility is accredited to the ISO/IEC 17025 standard for gold assays and all analytical methods include quality control materials at set frequencies with established data acceptance criteria. The entire sample is crushed and 250 grams is pulverized. Analysis for gold is by 50g fire assay fusion with atomic absorption (AAS) finish with a lower limit of 0.01 ppm and upper limit of 100 ppm. Samples with gold assays greater than 100 ppm are re-analyzed using a 1,000g screen metallic fire assay. A selected number of samples are also analyzed using a 48 multi-elemental geochemical package by a 4-acid digestion, followed by Inductively Coupled Plasma Atomic Emission Spectroscopy (ICP-AES) and Inductively Coupled Plasma Mass Spectroscopy (ICP-MS).

About Barkerville Gold Mines Ltd.

The Company is focused on developing its extensive mineral rights package located in the historical Cariboo Mining District of central British Columbia. Barkerville's Cariboo Gold Project mineral tenures cover 1,950 square kilometres; along a strike length of 67 kilometres which includes several past producing placer and hard rock mines, making it one of the most well-endowed land packages in British Columbia. Since the management change in mid-2015, the Company has unlocked the fundamental structural controls of gold mineralization. The Company's Brownfield's exploration team is focused on developing and delineating a mineable resource within the 7 kilometres of principle project area located near the town of Wells, British Columbia. The Company's Greenfield's team is developing quality exploration assets throughout the remaining land package through systematic, scientific, exploration. The operation's team is focused on developing and mining the Bonanza Ledge and BC Vein deposits on Barkerville Mountain. This operation allows the company to generate near term cash flow, train a local work force, keeps the present mining permit active, and de-risk's the project through staged production growth. Processing of material from these deposits is processed at the QR mill. QR is a fully owned, permitted mill and tailings facility, located approximately 110 kilometres away from Wells, and can be accessed by an all-season road.

Cautionary Statement on Forward -Looking Information

Neither the TSX Venture Exchange ('TSXV') nor its Regulation Services Provider (as that term is defined in the policies of the TSXV) accepts responsibility for the adequacy or accuracy of this release. No stock exchange, securities commission or other regulatory authority has approved or disapproved the information contained herein. This news release contains forward-looking information which is not comprised of historical facts. Forward-looking information involves risks, uncertainties and other factors that could cause actual events, results, performance, prospects and opportunities to differ materially from those expressed or implied by such forward-looking information. Forward looking information in this news release includes, but is not limited to, the Company's objectives, goals or future plans, statements regarding exploration results and exploration plans. Factors that could cause actual results to differ materially from such forward-looking information include, but are not limited to, capital and operating costs varying significantly from estimates, the preliminary nature of metallurgical test results, delays in obtaining or failures to obtain required governmental, environmental or other project approvals, uncertainties relating to the availability and costs of financing needed in the future, changes in equity markets, inflation, fluctuations in commodity prices, delays in the development of projects and the other risks involved in the mineral exploration and development industry, and those risks set out in the Company's public documents filed on SEDAR. Although the Company believes that the assumptions and factors used in preparing the forward-looking information in this news release are reasonable, undue reliance should not be placed on such information, which only applies as of the date of this news release, and no assurance can be given that such events will occur in the disclosed time frames or at all. The Company disclaims any intention or obligation to update or revise any forward-looking information, whether as a result of new information, future events or otherwise, other than as required by law.

Table 1: Length weighted gold composites from Island Mountain

HOLEID	FROM	TO	CORE LENGTH		
			(M)	AU (GT)	
IM-18-061	140.00	141.10	1.10	11.00	
	263.50	264.00	0.50	5.49	
	265.00	265.65	0.65	14.05	
	266.75	267.25	0.50	19.95	
	268.90	274.30	5.40	8.71	
	Including	270.20	271.70	1.50	13.55
		277.00	277.85	0.85	17.85
	294.00	294.50	0.50	5.23	
IM-18-062	36.50	37.20	0.70	10.45	
	74.30	75.30	1.00	8.55	
	158.70	163.00	4.30	37.28	
	185.30	186.40	1.10	18.70	
IM-18-063	251.55	252.40	0.85	7.18	
	370.15	371.10	0.95	5.41	
IM-18-064	138.50	139.35	0.85	3.65	
	155.10	155.75	0.65	3.52	
	295.80	297.20	1.40	7.05	
	Including	296.30	297.20	0.90	8.11
		322.30	323.90	1.60	6.18
IM-18-065	238.00	246.00	8.00	20.79	
	Including	240.80	241.90	1.10	53.00
	and	241.90	242.50	0.60	71.30
	and	245.10	246.00	0.90	23.30
IM-18-066	36.60	37.25	0.65	105.00	
	41.95	44.40	2.45	18.12	
	Including	41.95	42.80	0.85	41.00
	and	43.60	44.40	0.80	9.16
		59.70	61.50	1.80	22.89
	Including	59.70	60.30	0.60	34.60
		107.90	108.50	0.60	8.46
		134.70	142.00	7.30	10.01

	Including	134.70	135.55	0.85	15.30
	and	139.00	139.90	0.90	18.55
	and	141.00	142.00	1.00	19.70
		154.90	156.00	1.10	6.88
		190.35	191.40	1.05	10.50
		195.25	195.75	0.50	5.14
		196.45	197.75	1.30	19.40
		235.30	237.10	1.80	5.42
	Including	235.30	236.25	0.95	7.50
		483.60	484.10	0.50	17.80
IM-18-067		10.20	13.00	2.80	8.31
		136.00	139.00	3.00	17.24
	Including	136.00	136.50	0.50	23.70
	and	137.50	138.00	0.50	22.70
		147.50	148.00	0.50	28.40
		157.90	161.00	3.10	4.42
	Including	157.90	159.00	1.10	6.03
	and	159.70	161.00	1.30	5.38
		168.50	173.55	5.05	7.39
	Including	168.50	170.00	1.50	12.45
	and	173.05	173.55	0.50	12.70
		203.00	203.70	0.70	13.20
		208.70	209.20	0.50	10.50
		276.30	276.90	0.60	8.14
		385.55	386.10	0.55	31.50
		408.40	410.45	2.05	13.57
	Including	408.90	409.85	0.95	20.20
		429.60	431.80	2.20	35.84
	Including	430.55	431.80	1.25	58.00
IM-18-068		17.45	19.05	1.60	17.12
	Including	17.45	18.50	1.05	24.50
		76.15	78.60	2.45	11.61
	Including	77.50	78.60	1.10	16.00
		96.20	99.00	2.80	38.29
IM-18-069		51.70	52.20	0.50	38.00
		68.60	69.20	0.60	7.03
		139.50	140.55	1.05	5.19
IM-18-070		126.80	129.00	2.20	42.47
	Including	126.80	127.30	0.50	96.90
	and	127.80	128.35	0.55	37.80
		175.50	176.30	0.80	14.40
IM-18-071		21.90	23.40	1.50	27.03
	Including	21.90	22.40	0.50	32.20
	and	22.90	23.40	0.50	48.80
		135.85	141.50	5.65	9.71
	Including	135.85	136.40	0.55	36.30
	and	137.00	138.25	1.25	10.60
	and	140.20	141.50	1.30	15.95
IM-18-072		156.00	156.50	0.50	6.98
		378.10	379.25	1.15	20.15
	Including	378.10	378.60	0.50	36.80
IM-18-073		46.10	46.95	0.85	21.50
		66.45	67.00	0.55	20.90
		126.00	130.25	4.25	17.65
	Including	128.95	130.25	1.30	52.60
		148.00	148.60	0.60	10.35
IM-18-074		41.00	63.50	22.50	11.95
	Including	43.90	45.00	1.10	41.50
	and	48.70	50.00	1.30	23.30
	and	50.00	51.00	1.00	26.40
	and	51.80	53.15	1.35	22.70
	and	54.00	55.00	1.00	34.50
	and	56.60	57.80	1.20	21.40
	and	59.65	60.15	0.50	35.00
	and	60.15	61.50	1.35	21.10
		74.10	74.60	0.50	12.80
		79.00	80.35	1.35	14.71

		84.00	87.50	3.50	7.29
	Including	84.00	85.50	1.50	9.85
		197.00	197.50	0.50	6.03
IM-18-075		36.50	37.00	0.50	5.08
		61.10	62.60	1.50	6.52
		132.45	133.60	1.15	5.63
		278.75	279.40	0.65	10.05
		299.90	302.35	2.45	4.12
	Including	299.90	300.45	0.55	12.70
		310.70	311.30	0.60	57.70
IM-18-076		62.55	65.90	3.35	23.60
	Including	62.55	63.35	0.80	41.20
	and	64.15	65.30	1.15	37.90
IM-18-077		81.30	84.10	2.80	21.62
	Including	82.15	83.50	1.35	39.70
	and	83.50	84.10	0.60	10.95
		235.25	235.75	0.50	13.00
IM-18-078		65.60	67.60	2.00	21.18
	Including	65.60	66.60	1.00	31.80
IM-18-079		100.75	102.30	1.55	6.67
	Including	100.75	101.40	0.65	12.30
		128.40	130.00	1.60	11.17
	Including	128.40	129.00	0.60	23.20
	and	129.50	130.00	0.50	7.68
		155.00	156.00	1.00	8.41
		157.20	160.30	3.10	9.58
	Including	157.20	158.00	0.80	12.40
	and	159.00	160.30	1.30	15.00
		165.60	167.50	1.90	21.54
	Including	165.60	166.40	0.80	25.50
	and	167.00	167.50	0.50	40.90
		245.70	246.60	0.90	15.45
		268.60	269.20	0.60	14.50
		347.70	349.00	1.30	21.80
		356.90	357.40	0.50	5.72
		358.65	359.25	0.60	6.47
		370.55	372.35	1.80	17.17
	Including	371.05	371.85	0.80	22.70
		407.00	407.50	0.50	10.90
		408.50	409.00	0.50	24.40
		414.20	415.50	1.30	16.65
		430.00	430.50	0.50	23.30
		477.50	478.10	0.60	5.37
		485.50	486.00	0.50	6.35
		493.30	494.35	1.05	30.80
IM-18-080		94.45	96.00	1.55	14.00
	Including	95.30	96.00	0.70	23.00
		117.50	118.00	0.50	70.80
		131.00	131.50	0.50	10.05
		133.90	134.40	0.50	8.98
		136.60	137.10	0.50	8.49
		140.30	140.90	0.60	11.25
		266.60	270.60	4.00	9.26
	Including	266.60	267.25	0.65	7.75
	and	270.10	270.60	0.50	51.70
		376.90	380.00	3.10	5.35
	Including	379.00	380.00	1.00	10.70
		475.90	476.80	0.90	16.85
		490.80	492.45	1.65	7.99
	Including	491.45	491.95	0.50	17.30
		496.60	497.25	0.65	41.20
IM-18-081		268.50	269.00	0.50	113.00
		277.20	284.75	7.55	32.02
	Including	278.00	279.15	1.15	104.50
	and	282.35	283.40	1.05	55.50
	and	283.40	284.75	1.35	30.30
		295.00	295.75	0.75	8.28
		330.00	331.50	1.50	15.35

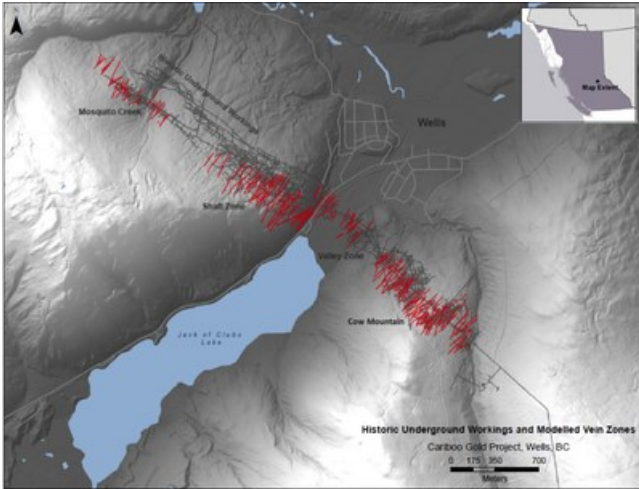
IM-18-082		171.25	172.60	1.35	5.59
		255.35	255.85	0.50	14.05
		329.00	329.50	0.50	11.50
		389.65	390.15	0.50	39.80
		414.25	415.25	1.00	15.20
		432.15	433.60	1.45	72.30
IM-18-083		43.50	45.00	1.50	3.10
IM-18-084		49.00	50.00	1.00	4.31
		66.00	67.00	1.00	5.02
IM-18-085		132.50	133.00	0.50	53.40
IM-18-086		87.70	89.50	1.80	8.45
	Including	89.00	89.50	0.50	26.50
		92.70	93.20	0.50	5.47
		101.00	101.90	0.90	8.46
		118.25	121.90	3.65	8.07
	Including	118.25	118.90	0.65	12.60
IM-18-087		141.00	141.60	0.60	46.80
		210.50	215.40	4.90	5.12
	Including	210.50	211.20	0.70	28.00
		225.20	225.80	0.60	6.57
		235.65	236.40	0.75	12.00
		241.95	253.15	11.20	17.56
	Including	243.00	244.30	1.30	18.30
	and	245.15	246.00	0.85	68.00
	and	247.00	247.50	0.50	21.70
	and	247.50	249.00	1.50	32.80
	and	252.00	253.15	1.15	16.95
		258.00	260.00	2.00	4.97
IM-18-088		74.80	75.30	0.50	16.00
IM-18-089		146.50	147.00	0.50	4.80
		148.80	149.30	0.50	7.48
IM-18-090		127.00	133.00	6.00	35.77
	Including	127.00	128.45	1.45	27.60
	and	128.45	129.80	1.35	66.30
	and	129.80	131.20	1.40	58.60

True widths are estimated to be 50 to 75% of reported core length intervals. Intervals not recovered by drilling were assigned zero grade. Top cuts have not been applied to high grade assays.

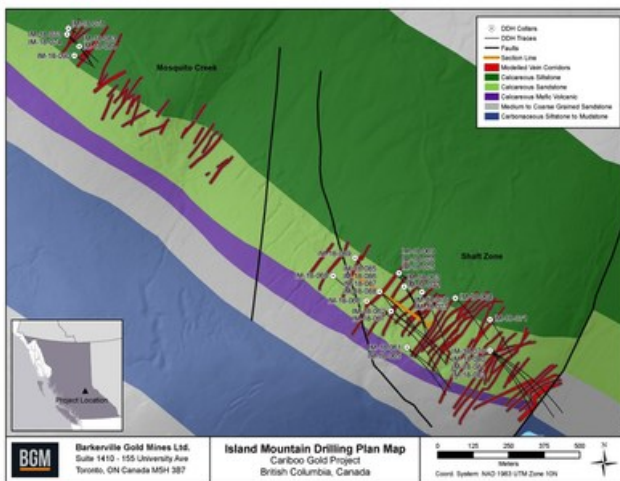
Table 2: Drillhole Collar Orientations:

HOLE ID	AZIMUTH	DIP
IM-18-063	145	-60
IM-18-062	125	-47
IM-18-064	133	-51
IM-18-067	127	-48
IM-18-069	124	-45
IM-18-070	125	-66
IM-18-071	145	-55
IM-18-072	144	-65
IM-18-073	136	-55
IM-18-074	129	-49
IM-18-075	148	-48
IM-18-076	150	-46
IM-18-077	151	-57
IM-18-078	121	-72
IM-18-079	120	-46
IM-18-083	146	-49
IM-18-085	140	-52
IM-18-060	129	-52
IM-18-068	131	-56
IM-18-080	124	-47
IM-18-084	145	-63
IM-18-086	127	-55
IM-18-087	128	-59
IM-18-089	140	-70
IM-18-090	119	-60

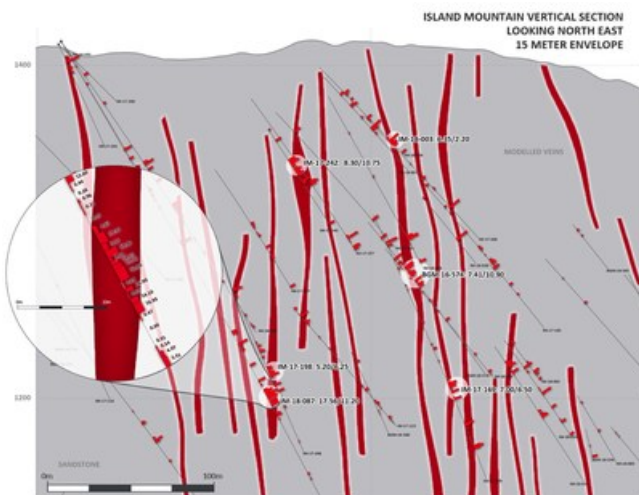
IM-18-088	130	-59
IM-18-061	133	-51
IM-18-081	130	-50
IM-18-065	126	-56
IM-18-082	137	-48
IM-18-066	123	-48



Historic Underground Workings and Modelled Vein Zones (CNW Group/Barkerville Gold Mines Ltd.)



Island Mountain Drilling Plan Map (CNW Group/Barkerville Gold Mines Ltd.)



Island Mountain Vertical Section (CNW Group/Barkerville Gold Mines Ltd.)

SOURCE Barkerville Gold Mines Ltd.

View original content with multimedia:

<http://www.newswire.ca/en/releases/archive/July2018/26/c7018.html>

%SEDAR: 00005589E

For further information: on Barkerville Gold Mines Ltd. please contact: Chris Lodder, President & Chief Executive Officer, 155 University Avenue, Suite 1440, Toronto, Ontario, Canada, clodder@barkervillegold.com

CO: Barkerville Gold Mines Ltd.

CNW 07:00e 26-JUL-18