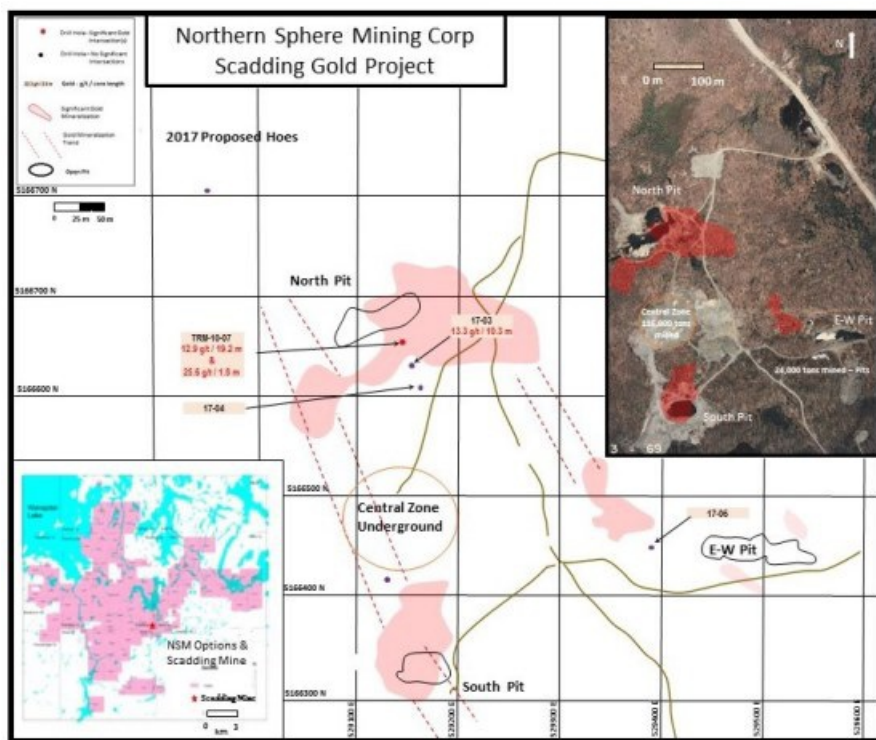


# Northern Sphere Mining Corp. announces first results from Scadding Drill Program, including 13.3 grams gold over 10.5 metres

Toronto, Ontario--(Newsfile Corp. - November 8, 2017) - Northern Sphere Mining Corp. (CSE: NSM) (OTCQB: NSMCF) ("Northern Sphere" or the "Company") is pleased to announce the first results from the Company's diamond drilling program on its Scadding Gold Project located near Sudbury, Ontario.

Hole 17-03 intercepted a mineralized chlorite breccia zone which hosted visible gold assaying at 13.3 grams gold over 10.5 metres. The hole was targeting potential extensions of the North zone which had been previously intersected by Hole 10-07 assaying at 12.9 grams gold over 19.3 metres. The intersection point demonstrates that mineralization may continue along strike and down plunge. The Company has drilled an additional hole (Hole 17-04) along strike of Hole 17-03 which intersected similar alteration and sulphide mineralization. Hole 17-04 is currently in the lab for assay.

The Company has also targeted a new zone of mineralization north east of the East-West Zone (Hole 17-06) and encountered approximately 100 metres (approximately 30 to 130 m) of mineralized chlorite breccia. The drilling continued at a depth beyond 158 metres. The hole intersected a significant fault structure, mineralized quartz veining along with apparent mineralized felsics.



**Scadding Gold Project**

To view an enhanced version of this graphic, please visit:  
[http://orders.newsfilecorp.com/files/2104/30310\\_figure1.jpg](http://orders.newsfilecorp.com/files/2104/30310_figure1.jpg)

Upon receipt of the balance of the assays, the Company plans to interpret the data and proceed as soon as reasonably practicable with an additional 3,000 metre drill program.

The Scadding Gold Project, located within the Sudbury Mining District, is accessible by a serviced, all-season road. The property is a past producing mine that produced over 29,000 ounces of gold from approximately 140,000 tons of ore at a head grade of 7.2 grams per ton in the late 1980s. The mine was subsequently closed due to falling gold prices.

## Quality Control

Northern Sphere's quality control and assurance program includes the use of an independent certified lab, AGAT Laboratories ("AGAT") of Mississauga, Ontario. All AGAT geochemical hub laboratories are accredited to ISO/IEC 17025:2005 for specific analytical procedures. The AGAT quality program includes quality control steps through sample preparation and analysis, inter-laboratory test programs, and regular internal audits. It is an integral part of day-to-day activities, involves all levels of AGAT staff and is monitored at top management levels.

## Qualified Persons

Steve Gray, P.Geo., Vice President of Northern Sphere has reviewed, prepared and approved the scientific and technical

information in this press release and is Northern Sphere's "Qualified Person" as defined by National Instrument 43-101 - *Standards of Disclosure for Mineral Projects*.

### **About Northern Sphere Mining Corp.**

Northern Sphere is dedicated to growth through the acquisition and development of mining assets with an emphasis on gold, silver and copper. The Company intends on generating robust mining projects through the use of cutting-edge exploration technologies to assist with more precise mineral targeting on its assets. Headquartered in Toronto, Ontario, Northern Sphere has a strong project pipeline of properties with a focus on gold, silver and other metal production in pro-mining jurisdictions.

### *Cautionary Statements*

*This press release contains forward-looking statements which reflect Northern Sphere's current expectations regarding future events. The forward-looking statements involve risks and uncertainties. Actual results could differ materially from those projected herein. Northern Sphere disclaims any obligation to update these forward-looking statements other than as required by applicable securities laws.*

### **For further information, please contact:**

A. John Carter  
Chief Executive Officer  
Northern Sphere Mining Corp.  
Tel: 905-302-3843

***The Canadian Securities Exchange has not reviewed and does not accept responsibility for the adequacy or accuracy of this release.***